

CTERA Insight

Maximize your business outcomes with full data visibility



CTERA Insight delivers control, transparency, and operational insight into your data, empowering your organization with a 360-degree view through an intuitive, powerful interface. No more guesswork—CTERA Insight puts you in the driver's seat, providing the clarity you need to make informed decisions and optimize performance.

Core Features of CTERA Insight



Unified Dashboard: Get a complete picture of your data environment at a glance. Monitor system health, track storage capacity, and review performance metrics—all from a single, intuitive interface.



Activity Monitoring: Stay informed about how your data is being used. CTERA Insight provides real-time file access and user activity tracking, helping you spot anomalies and detect potential threats early.



Data Discovery: Transform raw data into actionable insights. Identify usage patterns, pinpoint redundant files, and uncover opportunities to optimize storage and cut costs.



Issue Resolution: Comprehensive user activity logs and file access tracking help diagnose and resolve issues quickly. With detailed, actionable insights, you can minimize disruptions and maintain smooth operations.



Scalability: Scale storage resources effortlessly as your data grows. CTERA Insight's automated scaling capabilities ensure your infrastructure evolves alongside your business needs.



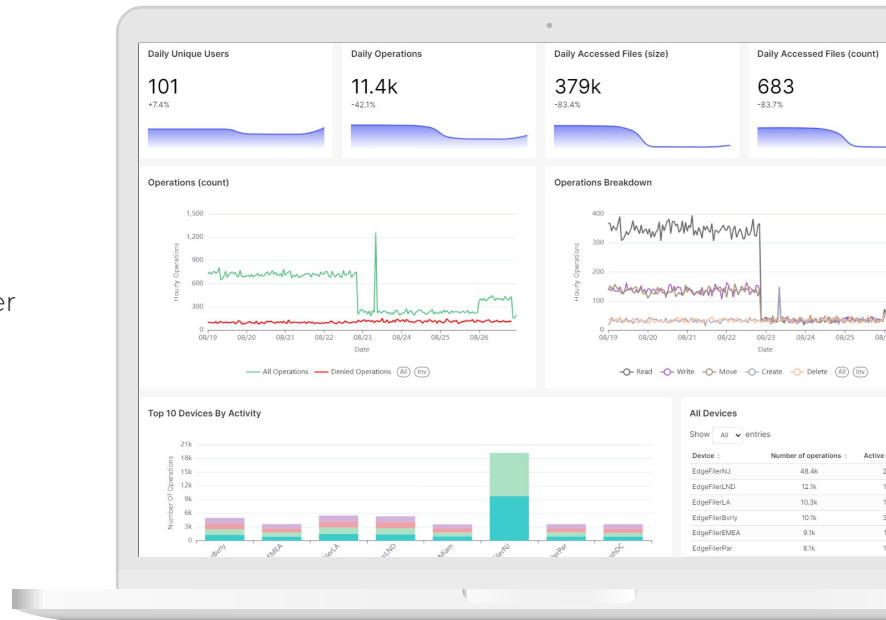
Granular Control: Take command of your data with advanced controls. Set precise access permissions, enforce compliance standards, and strategically manage storage locations to align with your operational goals.

Technical Specifications:

- ✓ **Supported Platforms:** Works with on-premises, hybrid, and cloud environments including AWS, Azure, and Google Cloud.
- ✓ **Security:** End-to-end encryption and detailed audit logs.
- ✓ **Integration:** Compatible with SMB, NFS, and REST APIs for easy integration with your current systems.
- ✓ **Compliance Support:** Ensures your data meets compliance requirements like GDPR, HIPAA, and others.

Why CTERA Insight?

CTERA Insight is built to help you manage your data efficiently, from security to storage. Whether you're preventing security breaches or preparing for future growth, Insight provides the tools you need to keep your data in check without adding complexity.



CTERA Insight helps solve common challenges in data management by providing clear, actionable insights.



Data Growth and Emerging Trends Tracking

Spot trends in real time to plan storage needs, optimize performance, and drive smarter, sustainable growth.



Cross-department Data Strategy Unification

CTERA Insight fosters collaboration and reduces redundancies, streamlining workflows to enhance overall organizational efficiency.



Optimize Storage Costs with Hot and Cold Data Management

Leverage insights into data access patterns to allocate storage efficiently or delete stale unused data altogether. CTERA Insight helps you strategically store high-demand data for quick access, while moving less-accessed data to economical storage tiers, maximizing efficiency and lowering costs.



Strengthen Governance and Compliance with Comprehensive Audit Trails

Detailed audit logs provide long-term, immutable records of all user activities, securely stored in an offsite archive. Insight enables comprehensive monitoring, simplifies compliance efforts, and assists in security investigations by centralizing all access patterns and user activity in one location.

CTERA Insight equips your organization with the tools to simplify data management, while staying secure and scalable. By offering clear visibility into your entire data landscape and ensuring proactive protection against threats like ransomware, it removes the guesswork from managing growing data environments.

With CTERA Insight, you'll have confidence that your data is always secure, accessible, and ready to meet your evolving needs.

